



**BEAVER CONSTRUCTION COMPANY**



**BEAVER'S CASA KARPAGAM  
WEST MAMBALAM**

**Call: 90030 83091**



# BEAVER CONSTRUCTION COMPANY



Rain Water Harvesting



Diesel Generator



Automatic Lift



East Facing



Gas Bank



Solar Power

Enjoy the luxury of  
independent living  
with the comfort of  
apartment amenities



Video Door Phone



Rain Water Harvesting



CCTV Coverage

**Call: 90030 83091**



# BEAVER CONSTRUCTION COMPANY

## PROJECT DETAILS

- ✓ Stilt + 3 Floors
- ✓ One apartment per floor
- ✓ 3 BHK | 1807 sq.ft
- ✓ Stilt covered car parking
- ✓ 2 Parking per flat
- ✓ East facing entrance
- ✓ Vasthu compliant

## PREMIUM FEATURES

- ✓ Automatic lift up-to terrace
- ✓ Automatic diesel generator
- ✓ Solar power for common area
- ✓ Gas bank facility
- ✓ Video door phone
- ✓ CCTV coverage
- ✓ Rain water harvesting
- ✓ Beautifully landscaped set back

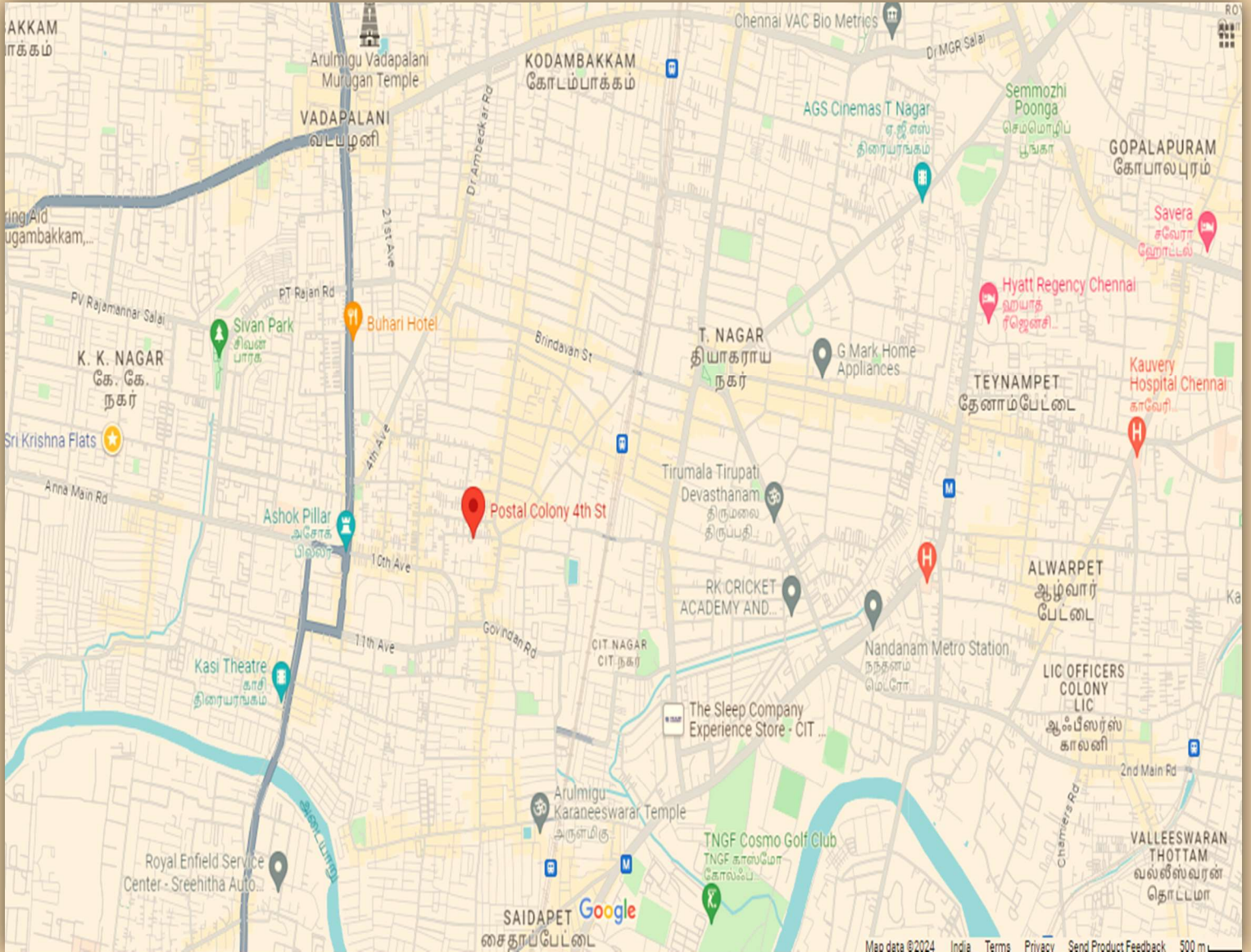
**Call: 90030 83091**





# BEAVER CONSTRUCTION COMPANY

## GEO LOCATION MAP



**Call: 90030 83091**



# BEAVER CONSTRUCTION COMPANY

## LOCATION ADVANTAGES

### Schools & Colleges

Jaigopal Garodiya – 100 mts  
Seetharam Vidhyalaya – 250 mts  
Narayana Tech School – 1 km  
MIET Kodambakkam – 2.3 km  
PSBB School – 2.6 km  
Meenakshi College of Eng. – 4.5 km

### Hospitals

SRM Hospital – 1 km  
Public Health Centre – 500 mts  
Kauvery Hospital – 3.6 km  
Vijaya Hospital – 3.5 km  
SIMS Hospital – 4.5 km

### Worship

Sai Baba Temple – 1 km  
Sri Ram Samaj Ayodhya – 500 mts  
Mahaganapathi Temple – 600 mts

### Food & Shopping

A2B Restaurant – 1.7 km  
**T Nagar Shopping Hub – 2 km**  
Manoj Bhavan – 1.3 km  
Geetham Veg Restaurant – 1.5 km  
Pazhamudhir Nilayam – 1 km

### Entertainment

Forum Mall – 3.5 km  
Chandra Metro Mall – 4.3 km  
AGS Cinemas – 3.1 km

### Transportation

Mambalam Railway Station – 1.5 mts  
Ashok Nagar Metro – 1.7 km  
Vadapalani Metro – 3.5 km  
Chennai Airport – 10 km

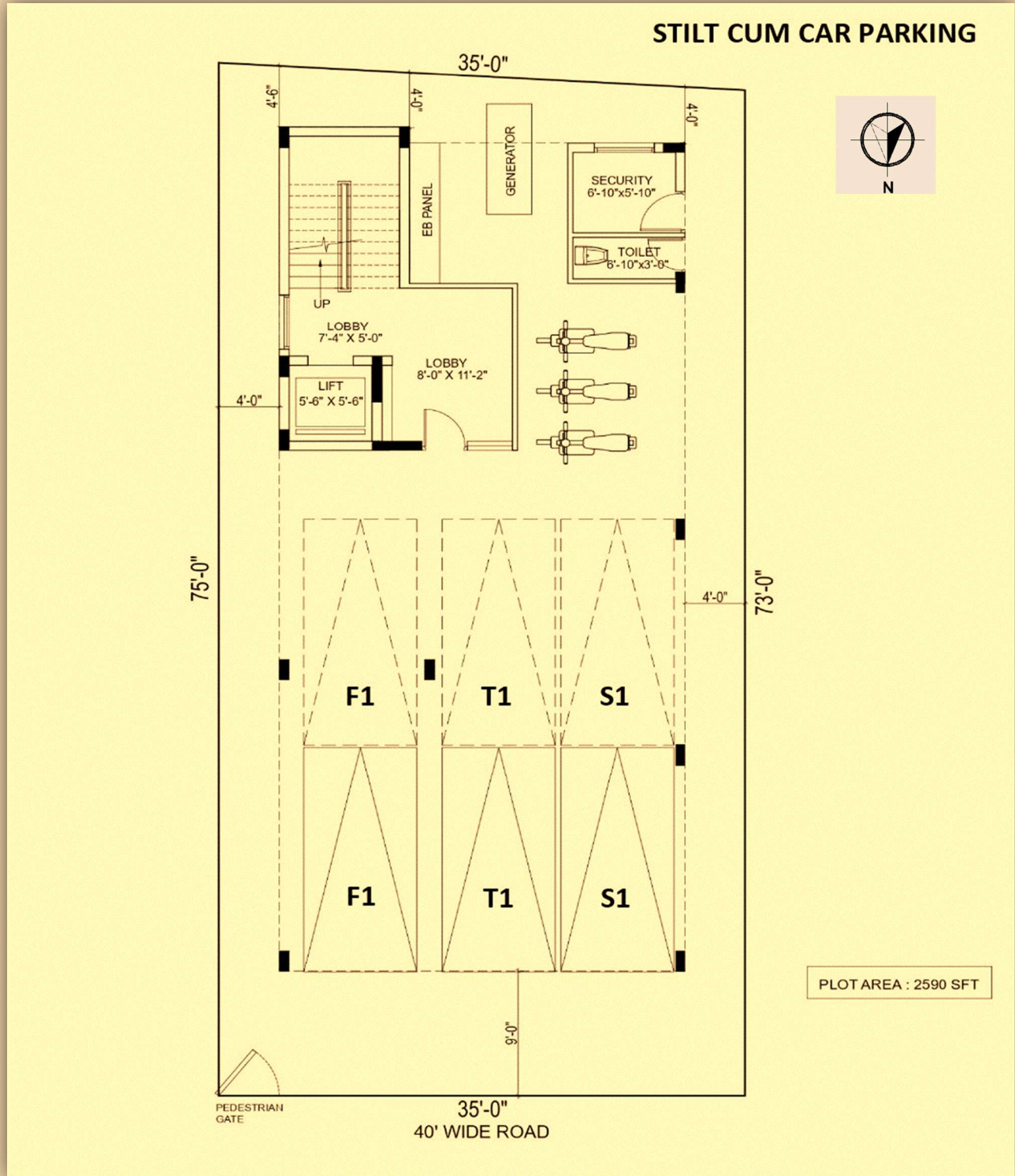
**Call: 90030 83091**





# BEAVER CONSTRUCTION COMPANY

## STILT CUM CAR PARKING



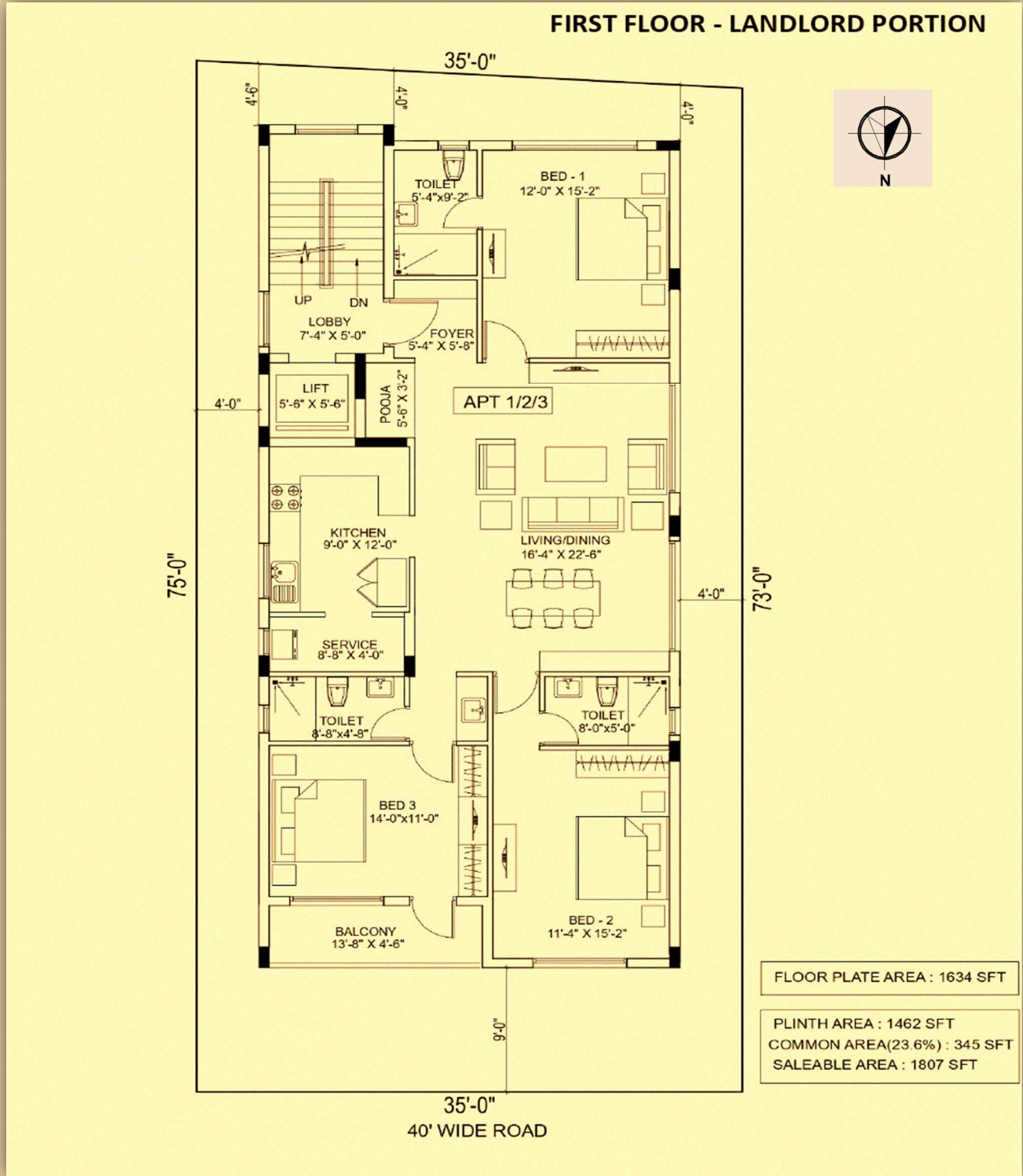
**Call: 90030 83091**





# BEAVER CONSTRUCTION COMPANY

## FLOOR PLAN - FIRST FLOOR



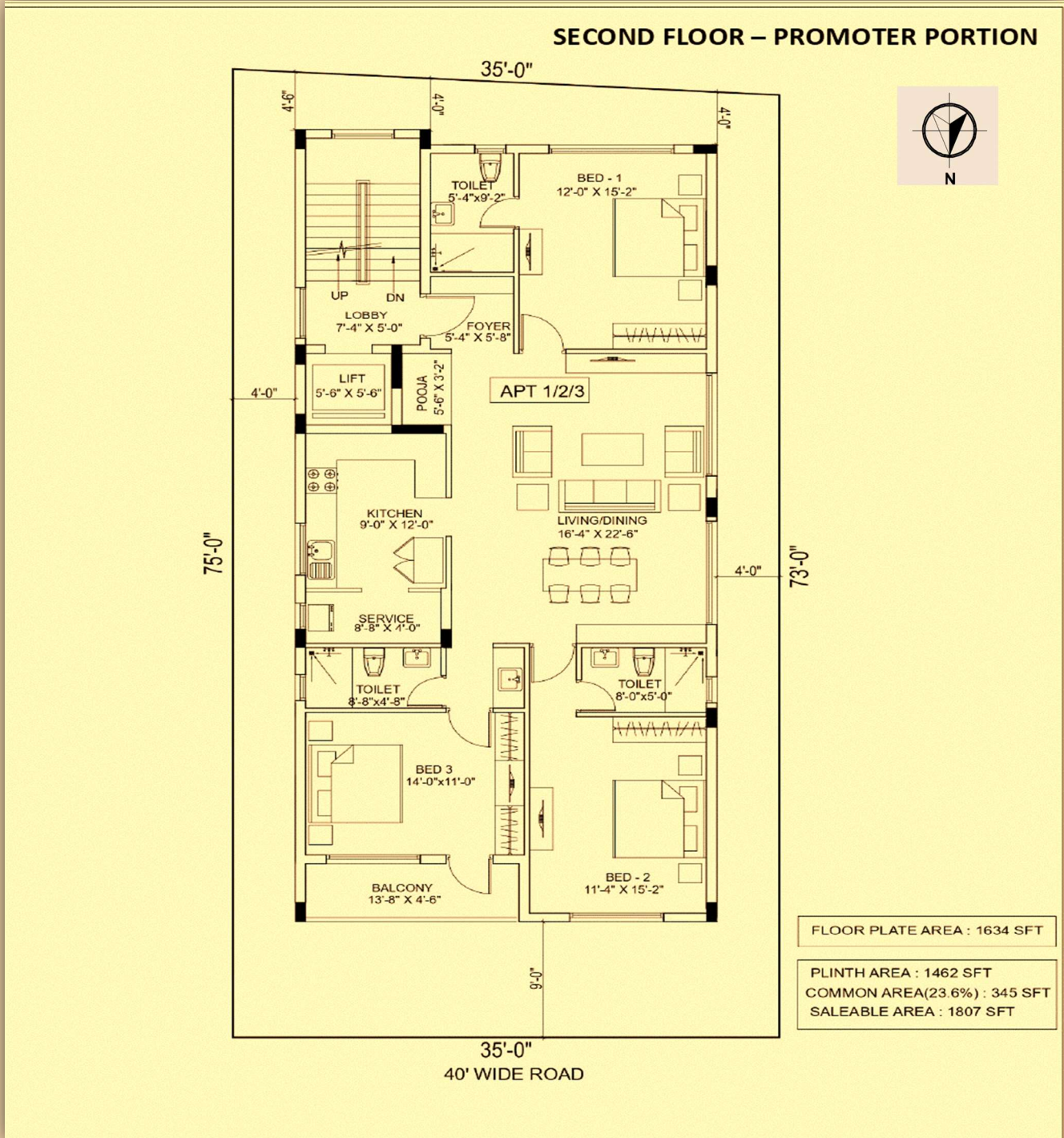
**Call: 90030 83091**





# BEAVER CONSTRUCTION COMPANY

## FLOOR PLAN - SECOND FLOOR



**Call: 90030 83091**

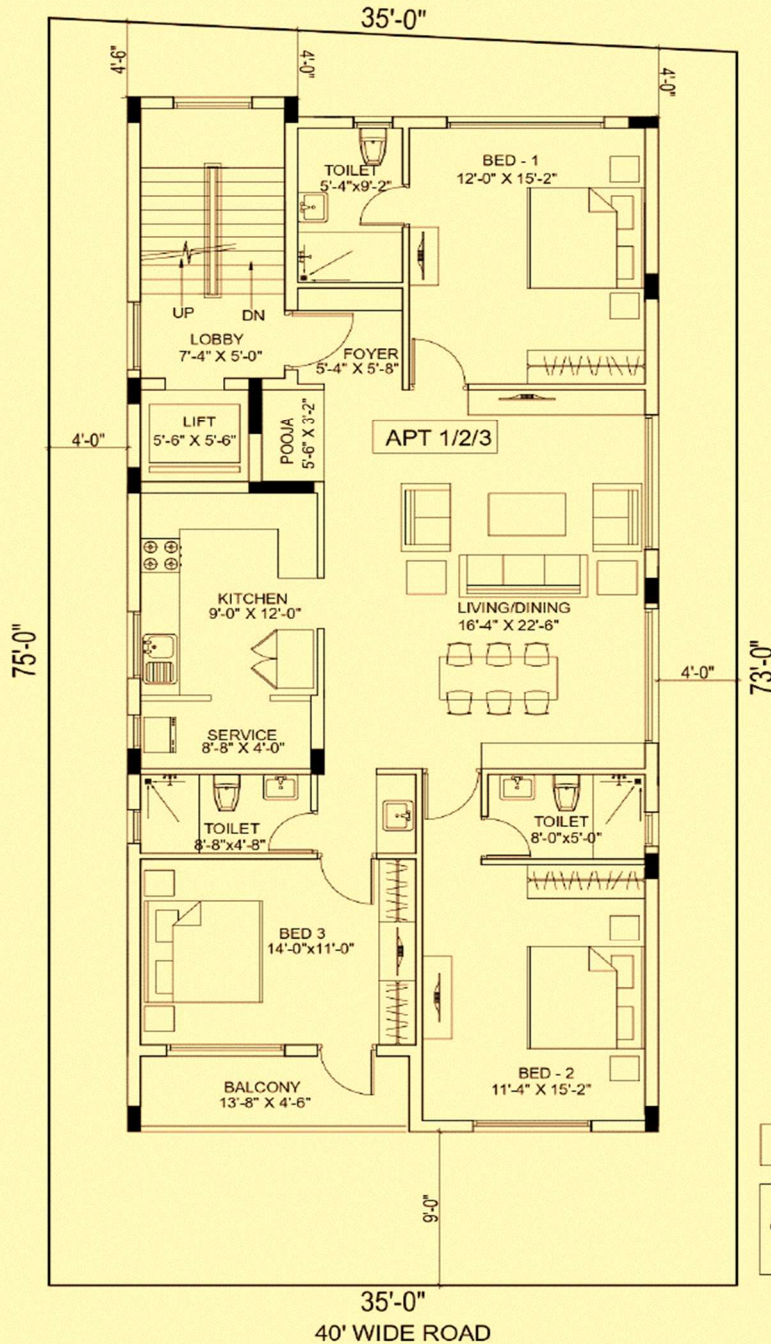




# BEAVER CONSTRUCTION COMPANY

## FLOOR PLAN – THIRD FLOOR

### THIRD FLOOR – PROMOTER PORTION



FLOOR PLATE AREA : 1634 SFT

PLINTH AREA : 1462 SFT  
COMMON AREA(23.6%) : 345 SFT  
SALEABLE AREA : 1807 SFT

Call: 90030 83091



# BEAVER CONSTRUCTION COMPANY

## OUR OTHER PROJECTS



**VEENA GARDENS - WEST MAMBALAM**



**VASUDEVA - VADAPALANI**



**SREE VIDHYA - CHROMEPET**



**SAHANA - MADURAVOYAL**

**Call: 90030 83091**





**BEAVER CONSTRUCTION COMPANY**

**THANK YOU**

**BEAVER CONSTRUCTION COMPANY  
No.6A, "Beaver's Narayani", Ground Floor,  
Postal Colony 3rd Main Road,  
West Mambalam, Chennai 600033**

**[www.beavercc.in](http://www.beavercc.in) | [ram@beavercc.in](mailto:ram@beavercc.in)**

**Call: 90030 83091**